

# Easter



## Pre-Reading

### A. Warm-Up Questions

1. When is Easter celebrated?
2. What religion is Easter associated with?
3. What non-religious Easter traditions do you know about?
4. What symbols of spring do you know?

### B. Vocabulary Preview

Match up as many words and meanings as you can.

Check this exercise again after seeing the words in context on page 2.

- |                     |   |
|---------------------|---|
| ___ 1. Easter       | a) the outdoor environment, including plants and animals      |
| ___ 2. commemorate  | b) a plant with a trumpet-shaped flower                       |
| ___ 3. church       | c) related to one's spiritual beliefs                         |
| ___ 4. religious    | d) to honour  |
| ___ 5. spring       | e) a religious building for Christians                        |
| ___ 6. resurrection | f) coming to life after being dead                            |
| ___ 7. nature       | g) to represent or mean something                             |
| ___ 8. symbolize    | h) the season after winter and before summer                  |
| ___ 9. lily         | i) a Christian holiday celebrating the return of Jesus Christ |
| ___ 10. pastry      | j) a sweet baked good   |

## Reading

1. **Easter** is the greatest festival of the Christian church. According to Christian beliefs, Easter Sunday **commemorates** the miracle of Christ's **resurrection** three days after his death. Christians all over the world celebrate Easter by attending **church** services, praying, and spending time with family and close friends. Easter falls on a different day each year. What day does Easter fall on this year?
2. Although Easter is celebrated as a **religious** holiday, it also has a non-religious side. The arrival of **spring** had been celebrated all over the world long before Easter became a Christian holiday. Many years ago, spring festivals were held each year to celebrate new life and the rebirth of **nature**. In many parts of the world, flowers and plants begin to reappear after the long winter and birds return to build their nests. Because the resurrection of Christ occurred in the early spring, the two celebrations have become closely tied together.
3. There are many symbols associated with the Easter season. Lambs, chicks, bunnies, and other baby animals **symbolize** the birth of new life. One of the most well-known symbols of Easter and springtime is the egg, which also represents new life. In modern times, chocolate Easter eggs and bunnies have become very popular. The white **lily**, also a symbol of rebirth, is the traditional Easter flower. In many cultures, **pastries** such as hot cross buns are also an important part of Easter.

## Writing

### WHAT DO YOU KNOW ABOUT THE EASTER BUNNY?

With a partner or small group, write a short paragraph about the tradition of the Easter bunny.

---

---

---

---

---

---

---

# Comprehension

## A. Answer Questions

Practise asking and answering the following questions with your partner. Then write the answers in the spaces below.

1. What does Easter Sunday commemorate?

---

2. What do Christians do to celebrate Easter?

---

3. Before Easter, there were many spring festivals. What were these festivals celebrating?

---

4. What are some symbols associated with the Easter season?

---

5. What is the traditional Easter flower?

---

## B. Ask Questions

Can you think of any other questions you would like to know about Easter or the Easter season? Write your questions to the right, then ask your classmates to see if they know. Do some online research if no one knows the answers.

1. \_\_\_\_\_

---

---

2. \_\_\_\_\_

---

---

3. \_\_\_\_\_

---

---

# Vocabulary Review

## A. Unscramble the Words

Unscramble the words from the reading on page 2.  
Then use the words to make new sentences.

#	Word	Unscrambled	Sentence
1	rastee		
2	mmoratecoe		
3	gisprn		
4	irercstrueo		
5	retuna		
6	lyli		
7	seiroulig		
8	onn-seiroulig		
9	urcchh		
10	yrpats		

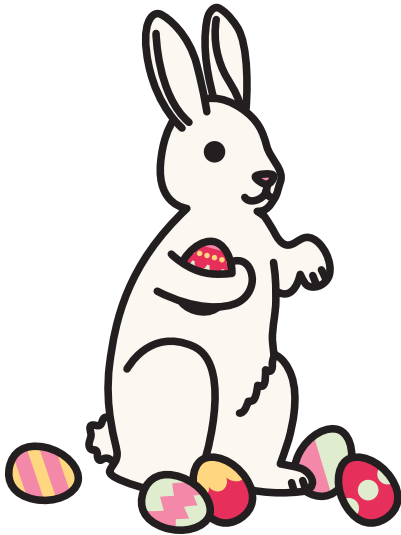
## B. Find the Words

Now find the words from the exercise above in the word search to the right.

e o c c d a y a s g d y f  
a a s o r e l i g i o u s  
i d s k m m r g m s e s e  
s s e t v m m i a ~~t i t y~~  
d t s f e s e e l e e d o  
e n a t u r e m m b b d r  
p c h u r c h k o u r t a  
a c l e p o r s p r i n g  
s i h i n o o a h t a l i  
p a s t r y c b d h e t o  
r g h f c y k z p e r t e  
y n o n r e l i g i o u s  
r e s u r r e c t i o n a

## Easter Cards

Write some Easter cards and give them to your classmates.



---

---

---

---

---

---

---

---

---

---



---

---

---

---

---

---

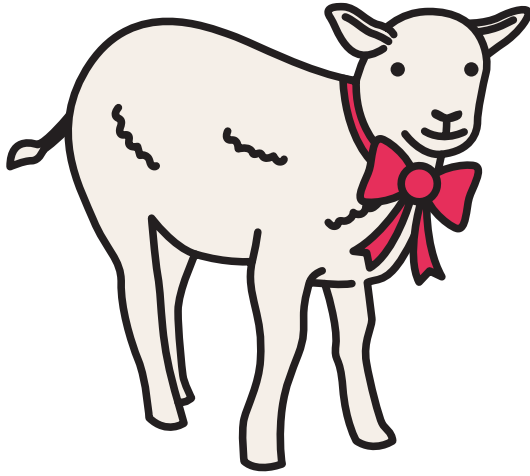
---

---

---

---

## Easter Cards cont.



---

---

---

---

---

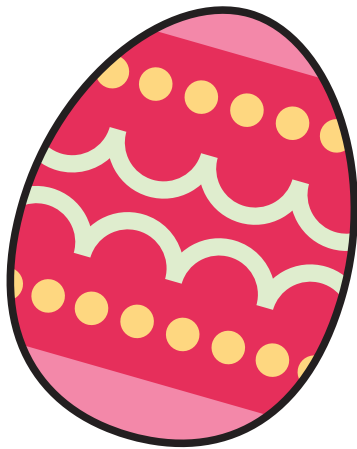
---

---

---

---

---



---

---

---

---

---

---

---

---

---

---

## Listening

Fill in the blanks as you listen to the recording.

1. Easter is the greatest festival of the Christian church. According to Christian beliefs, Easter Sunday \_\_\_\_\_ the miracle of Christ's resurrection three days after his death. Christians all over the world celebrate Easter by attending \_\_\_\_\_ services, praying, and spending time with family and close friends. Easter falls on a \_\_\_\_\_ day each year. What day does Easter fall on this year?
  
2. Although Easter is celebrated as a \_\_\_\_\_ holiday, it also has a non-religious side. The arrival of spring had been celebrated all over the world long before Easter became a Christian holiday. Many years ago, spring festivals were held each year to celebrate new life and the rebirth of nature. In many parts of the world, flowers and plants begin to \_\_\_\_\_ after the long winter and birds return to build their nests. Because the resurrection of Christ occurred in the early spring, the two \_\_\_\_\_ have become closely tied together.
  
3. There are many symbols associated with the Easter season. Lambs, chicks, bunnies, and other baby animals \_\_\_\_\_ the birth of new life. One of the most well-known symbols of Easter and springtime is the egg, which also represents new life. In \_\_\_\_\_ times, chocolate Easter eggs and bunnies have become very popular. The white lily, also a symbol of \_\_\_\_\_, is the traditional Easter flower. In many cultures, pastries such as hot cross buns are also an important part of Easter.

# Answer Key

## LESSON DESCRIPTION:

These activities are designed for lower intermediate level adult ESL learners, but they may also be suitable for junior high school ESL students.

## LESSON DESCRIPTION:

This lesson includes a reading, a writing task, comprehension questions, vocabulary development tasks, and an Easter card activity.

**LEVEL:** Low Int

**TIME:** 2–3 hours

**TAGS:** easter, Easter bunny, religion, holiday, Christian

## Warm-Up and Introduction to Easter

You can begin by bringing coloured or chocolate Easter eggs, Easter bunnies, Easter baskets, pictures associated with Easter, etc. to class. Ask the students to share any information they may already have about Easter or spring festivals in their countries.

## Pre-Reading

### A. WARM-UP QUESTIONS

1. Easter is celebrated in the spring (March or April).
2. Easter is a Christian holiday.
3. Answers will vary.
4. Answers will vary (e.g., cross, eggs, chocolate, bunnies, lambs, chicks).

### B. VOCABULARY PREVIEW

- |      |      |      |      |       |
|------|------|------|------|-------|
| 1. i | 3. e | 5. h | 7. a | 9. b  |
| 2. d | 4. c | 6. f | 8. g | 10. j |

## Reading (and/or Listening)

Read individually, in small groups, or as a class. You can also play the listening as your students read along. A gap-fill version of the reading is available on page 7. Help your students with vocabulary and expressions that they are unfamiliar with.

## Comprehension

1. (According to Christian beliefs...) Easter Sunday commemorates the miracle of Christ's resurrection three days after his death.
2. Christians all over the world celebrate Easter by attending church services, praying, and spending time with family and close friends.
3. Spring festivals were held each year to celebrate new life and the rebirth of nature.
4. Lambs, chicks, bunnies, and other baby animals symbolize the birth of new life. Also, eggs and white lilies are famous symbols.
5. The white lily is the traditional Easter flower.

## Vocabulary Review

### A. UNSCRAMBLE THE WORDS

Put students into pairs or small groups. Encourage them to try this exercise without looking back at the words on page 2.

- |                 |                  |            |
|-----------------|------------------|------------|
| 1. easter       | 5. nature        | 9. church  |
| 2. commemorate  | 6. lily          | 10. pastry |
| 3. spring       | 7. religious     |            |
| 4. resurrection | 8. non-religious |            |

*(continued on the next page...)*



## Answer Key cont.

### Vocabulary Review cont.

#### B. FIND THE WORDS

~~e o c c d a y a s g d y f~~  
~~a a s o r e l i g i o u s~~  
~~i d s k m m r g m s e s e~~  
~~s s e t v m m i a l i l y~~  
~~d t s f e s e e l e e d o~~  
~~e n a t u r e m m b b d r~~  
~~p e c h u r c h k o u r t a~~  
~~a c l e p o r s p r i n g~~  
~~s i h i n o o a h t a l i~~  
~~p a s t r y c b d h e t o~~  
~~r g h f c y k z p e r t e~~  
~~y n o n r e l i g i o u s~~  
~~r e s u r r e c t i o n a~~

### Listening

Play the recording and have students fill in the blanks.

1. commemorates, church, different
2. religious, reappear, celebrations
3. symbolize, modern, rebirth

### Easter Cards

Write some example messages on the board. Then have your students make some cards with simple Easter messages. Teach them different greetings (*To, Dear, Hi...*) and closings (*From, Love, Your friend...*)

- Happy Easter!
- Happy Easter to you and your family.
- Wishing you a happy Easter.
- Easter blessings!
- Celebrate the season.
- Happy spring!
- Wishing you new beginnings.
- I hope you find lots of chocolate!
- I hope the Easter bunny is good to you!